

## AC Replacement switches installation



**For Porsche 987 / 997**

[www.climarepair.com](http://www.climarepair.com)

# Step 1



Unscrew the T-30 torx (pick back the carpet) next to the passenger's foot 12V socket. Remove the same on other side.





## Step 1 (BOSE equipped cars)



**This step only applies to vehicles with a Bose Subwoofer in the passenger footwell.**

**Remove the plastic center cover from the air vent. It simply pulls off. This will expose a single Torx screw.**

**Now remove the large Torx screw that fastens the subwoofer to the console.**

**Pull rearwards on the subwoofer enclosure. The whole assembly will now be free.**

**Unplug the subwoofer harness and remove from the vehicle.**



## Step 2

Then remove the two T-20 torx on both sides, and then pull the two panels towards the back of the car.





## Step 3



## Step 3



The Arrow shows the location of a very delicate clip. Be cautious. On the passenger side the top corner of the panel likes to stay in place.

Use a screwdriver to create a lever arm (as pictured, and be very careful) and then bump the bottom to get that top clip free:

Apply force quickly and firmly to the bottom of the panel towards the dashboard. On the driver's side you may have to put the screwdriver against the radio face. Wrapping a microfiber towel around it prevents any damage.

## Step 4



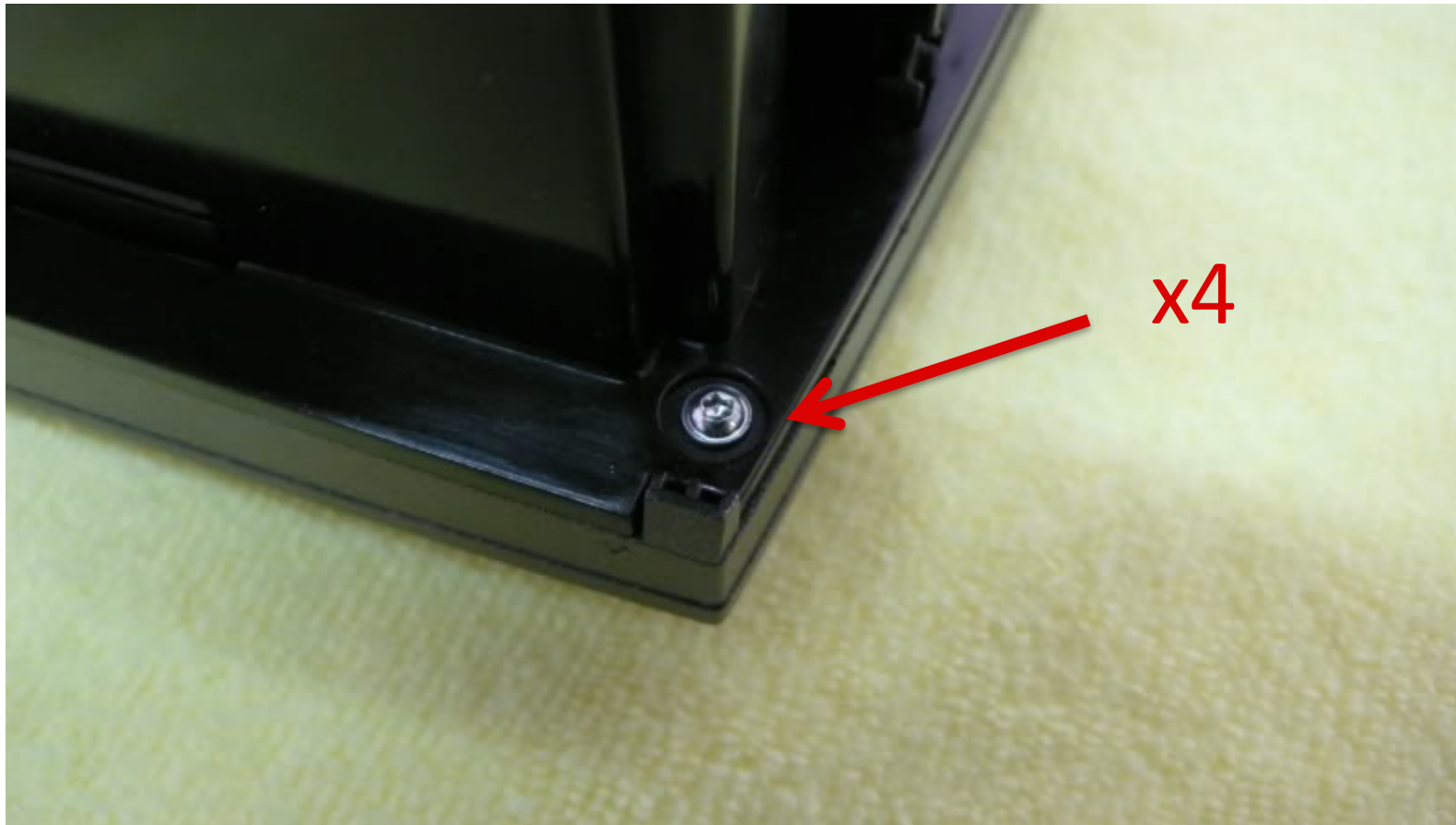
Press tab on each side at the same time, and while pressing slide out the AC module (having your shift knob in REVERSE helps with space)

Press on both metal TABS with both hands using your index fingers while sliding out the whole AC module by pulling from the front face with your thumbs (it's easier than it sounds)





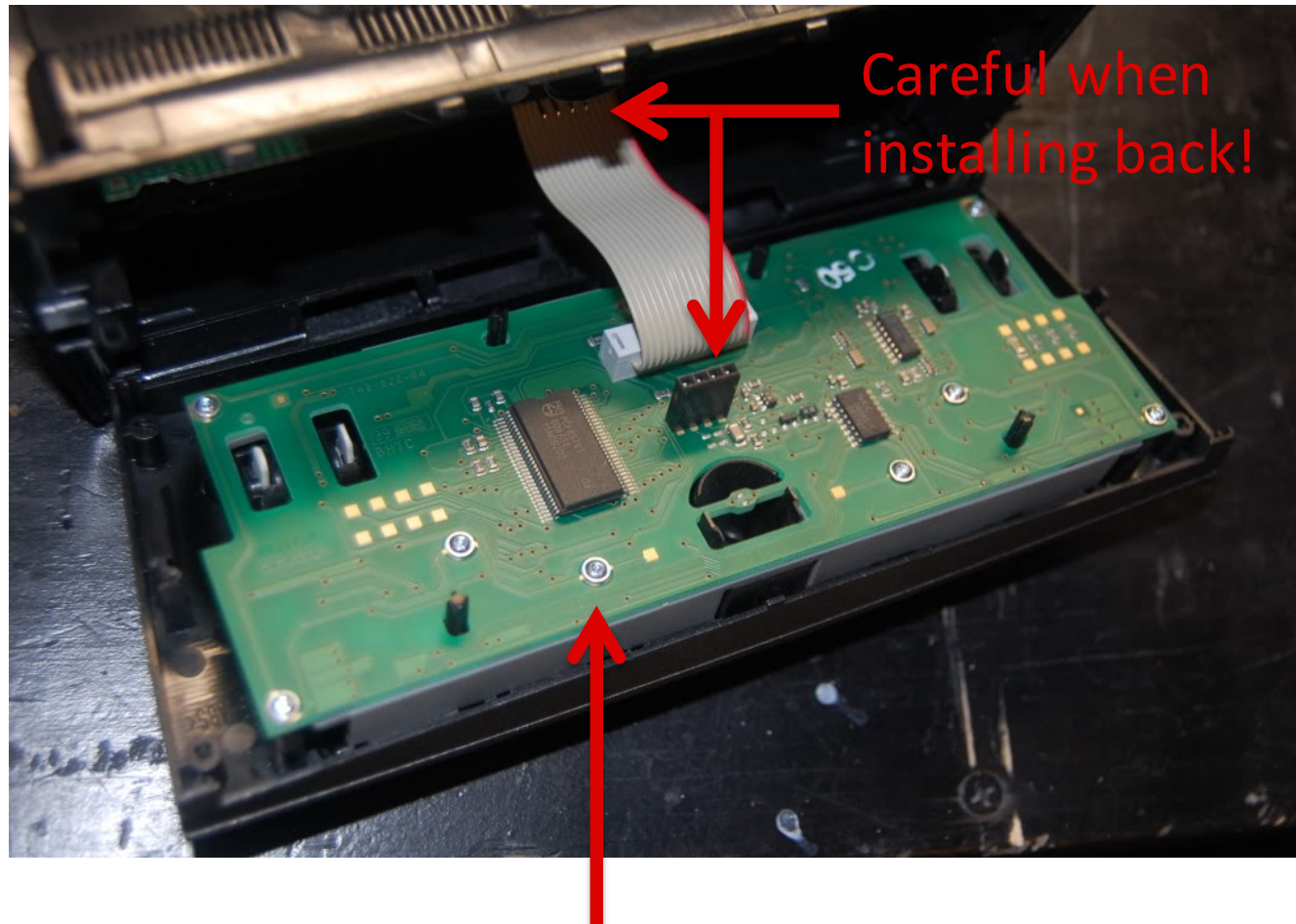
## Step 5



Now use a towel or something soft and work on top.  
There are 4 T6 screws in the back of the front panel that needs to be removed.

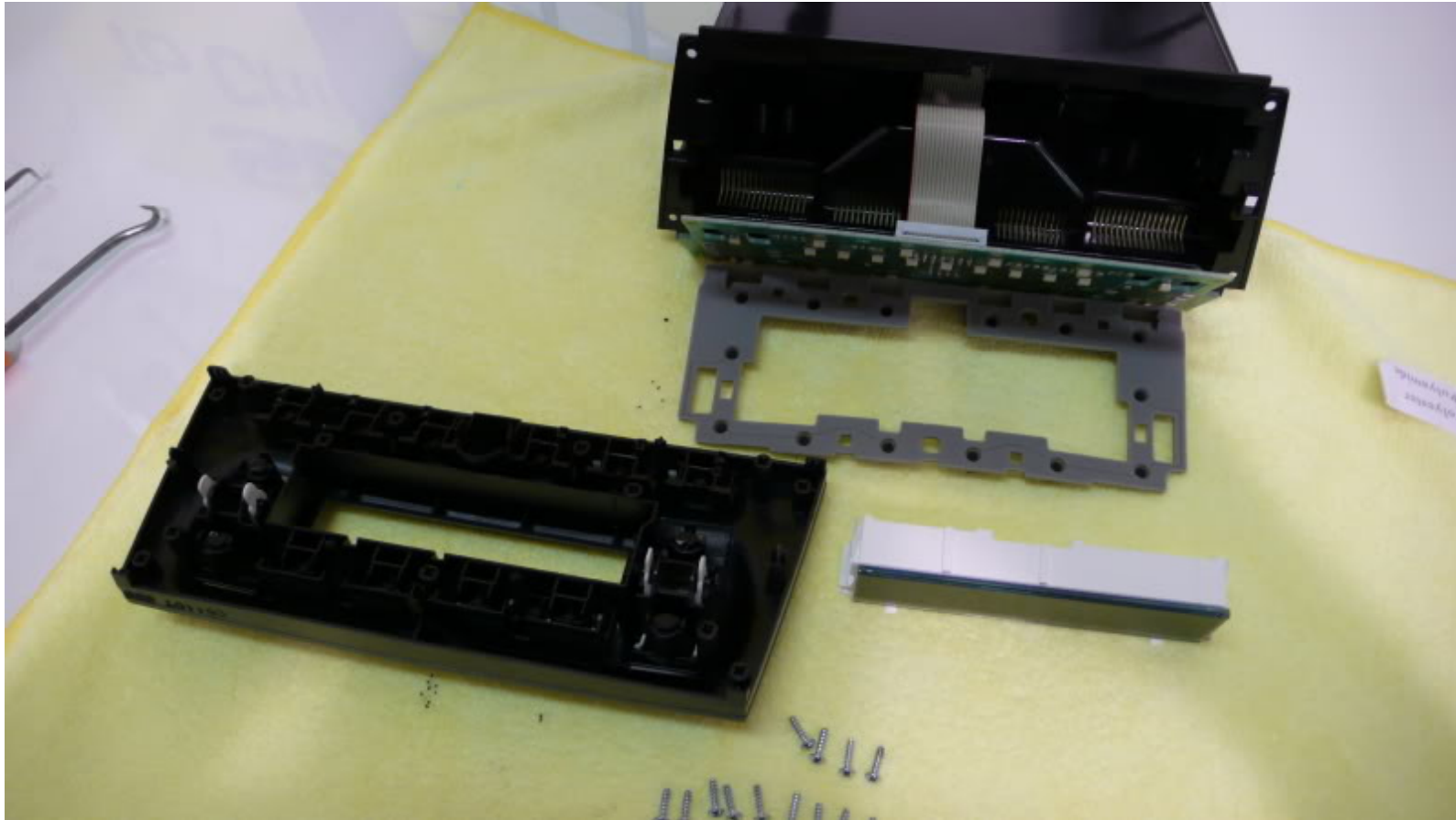


## Step 6



Remove the 9 T6 screws that holds the board in place, do not disconnect any cables.

## Step 7



Remove rubber sheet and LCD screen carefully (which has 4 parts, we will cover that later)

## Step 8

Watch instructional video on how to easily remove the switches:



[https://youtu.be/iC\\_H\\_ypHVjU](https://youtu.be/iC_H_ypHVjU)



## Step 8

Dont forget to put those back in place ;)



## Step 9



To install, just watch the video and follow the steps in the reverse order

## IMPORTANT NOTICE



STOP PRESSING HERE OR YOU WILL PEEL OFF THE BUTTON AGAIN!



## IMPORTANT NOTICE



## IMPORTANT NOTICE

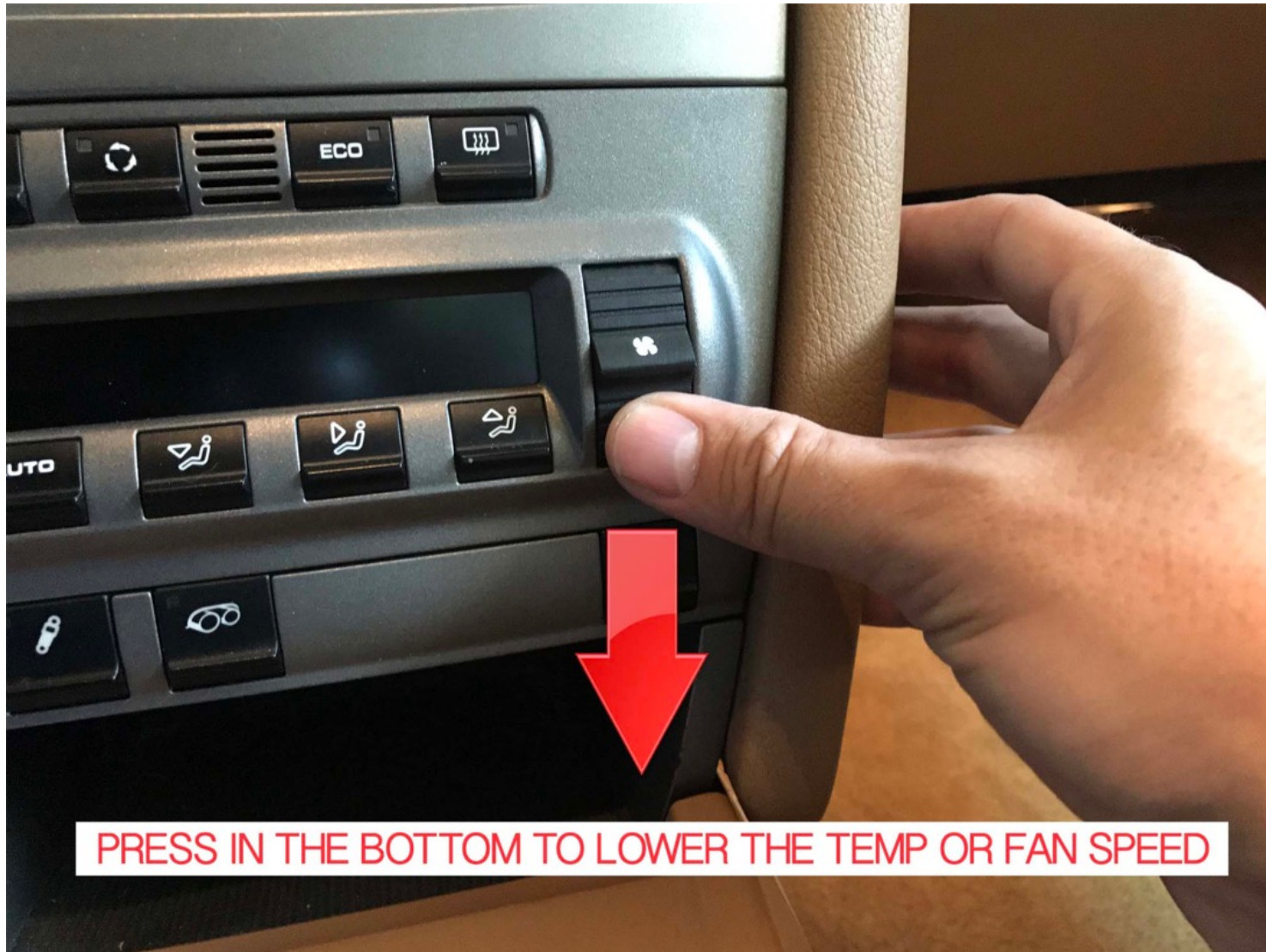


PRESS AT THE TOP TO RAISE THE TEMP OR FAN SPEED

## IMPORTANT NOTICE



## IMPORTANT NOTICE



PRESS IN THE BOTTOM TO LOWER THE TEMP OR FAN SPEED



[www.climarepair.com](http://www.climarepair.com)